

Case Study

Vitacress Salads



apolloconnect
M2M web based monitoring & control

The Company

Vitacress - Europe's leading grower and packer of watercress and speciality vegetables, supplying retailers and food manufacturers in the UK, Spain, Portugal and Holland.

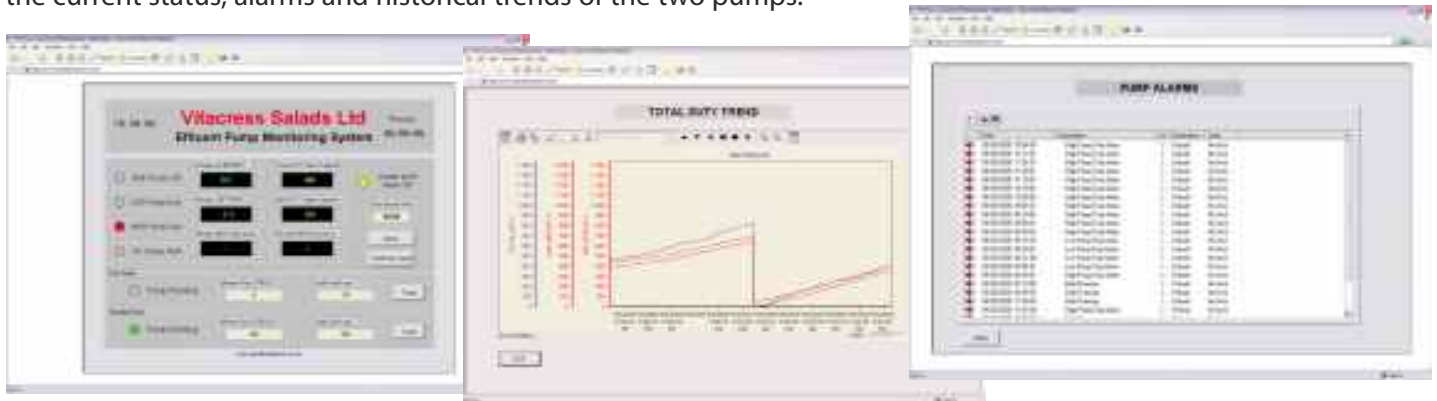


The Problem

The Senior Development Engineer was aware that excess waste water was being pumped into their treatment plant resulting in unnecessary processing costs being incurred. Apollo Connect was asked to design a system to monitor the duty times of the effluent pumps and automatically trigger an alarm if they exceeded the normal duty profile.

The Solution

An effluent pump monitoring system was installed utilising the TB300 Telecontroller. This had to take into account the fact that production output varied from day to day, and therefore had to set up various user profiles within it. An embedded web server within the unit was connected to the local area network which enabled them to display the current status, alarms and historical trends of the two pumps.



One of the major advantages of the Apollo Connect Telecontroller is the fact that it uses standard web browsing software, and therefore allows various departments within the site to monitor the pumps without having to install more software or purchase any extra user licences.



The telecontrol unit is connected to a GSM modem which enables text messages to be sent to duty engineers when an alarm is activated as well as remote interrogation of the plant if required.

