

The Company

Vauxhall Motors - Ellesmere Port plant - manufacturing home of the Astra

The Problem

Vauxhall's Ellesmere Port plant houses 4 large HTHW boilers providing high temperature hot water for both heating and production purposes. As Ellesmere Port runs on a 24 hour basis, these boilers require constant operational supervision from the control room.

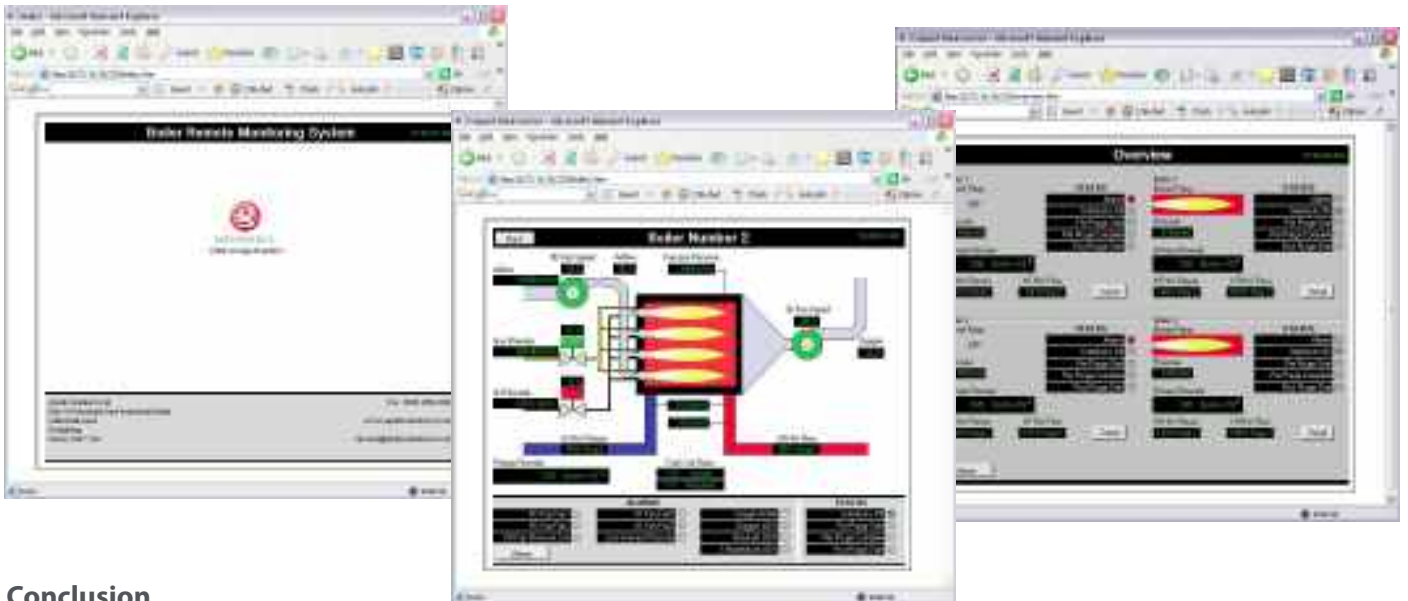
Vauxhall's senior supervisor required his team to have the ability to monitor this complex plant from any remote location. Importantly, this had to be facilitated as cost effectively as possible, without incurring additional software licence fees.



The Solution

Apollo Connect provided Vauxhall with a web based solution based around their TB300 Tbox platform. This system was installed incorporating both Ethernet and GPRS connectivity. The TB300 was linked to the existing SCADA system and now provides the engineering team with full remote access to the boiler status - including live data, alarm history and trends.

Alarms are delivered via email and SMS directly to the specified engineer. This can be configured remotely to allow full flexibility regarding scheduling the duty engineers availability. To ensure maximum security, the system is accessed through a VPN and incorporates multi password protection.



Conclusion

This Apollo Connect installation now ensures that any potentially catastrophic boiler outages that could threaten car production are immediately brought to the attention of the engineering team, day or night - enabling them to monitor the critical data and take the necessary action immediately from any location to minimise any potential problems.

